



**FALL/WINTER 25  
FOOTWEAR TRENDS  
PRESS KIT**

LIVETREND x **MICAM<sup>99</sup>**  
M I L A N O

# INTRO MICAM BUYER'S GUIDE



FALL / WINTER 2025 / 2026 FOOTWEAR



## WHAT

MICAM is presenting the first AI-driven FOOTWEAR TREND AREA and BUYER GUIDE for an International trade fair. As an exclusive service offered by MICAM, this data-driven project is born out of a desire to enhance the visitors' experience by giving them the most reliable seasonal trend directions in order to optimize their buying.

## WHY

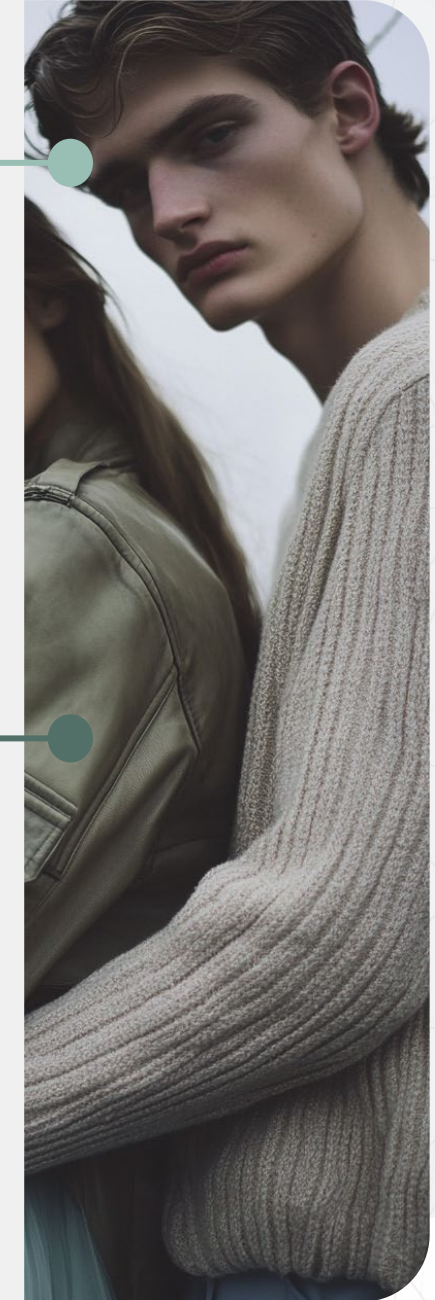
The DATA-DRIVEN & AI GENERATED TREND GUIDE translates the desire for innovation to meet the needs of a changing industry. MICAM intends to provide the most precise forecasting to help its visitors buying more bestsellers products in order to avoid overstocks, to reduce the unsold goods, optimizing business and ecological impact.

## WHO

MICAM is partnering with Livetrend, a pioneering start-up in trend intelligence and data analytics. The innovative digital solution analyzes millions of images and information from the most influential web sources to detect and track the trends. For this collaboration Livetrend brings its technology to footwear with specifically developed algorithms.

## HOW

This DATA-DRIVEN & AI GENERATED PRESS KIT includes 4 seasonal macro trends for FW25. Presenting an overview of the concepts, colors and the must-haves products for women, men and kids. This report highlights the data analyzed from Instagram, E-commerce, Fashion Shows and Consumer Interest, used to support the trend forecasting with concrete information.



# INTRO DATA-DRIVEN & AI GENERATED TRENDS

## DATA SOURCES



### MARKET

YEAR ON YEAR TREND  
GROWTH ON E-COMMERCE



### INSTAGRAM

YEAR ON YEAR GROWTH OF  
TREND VISIBILITY ON INSTAGRAM



### FASHION SHOWS

YEAR ON YEAR VISIBILITY GROWTH  
OF THE TREND DURING FASHION SHOWS

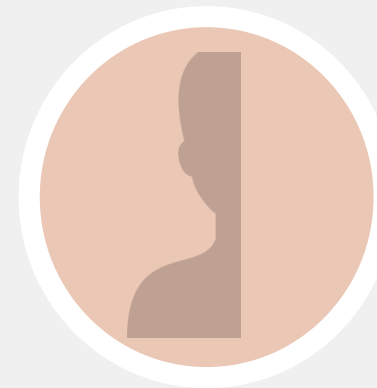


### CONSUMER INTEREST

CONSUMER SEARCH RATE  
GROWTH YEAR ON YEAR



## MARKETS



WOMEN



MEN



KIDS

# SEASON OVERVIEW FW25

FALL / WINTER 2025 / 2026 FOOTWEAR



## ECHOS OF EMPATHY

Amidst the haze of uncertainty and the weariness of crisis, the year 2026 ushers in a glimmer of hope, where a collective yearning for positive change takes root within us. We must seek a broader perspective and deeper sense of purpose to catalyze a transformation. But what drives us forward?

Aristotle's wisdom suggests that happiness is the ultimate aim of human actions. Yet today, happiness is often conflated with ideals of capitalist success and a pursuit of validation that only serves to disconnect us from our true source of joy: Our humanity and our connections are offering solace and strength. To truly thrive, we must strengthen our sense of human connection and social responsibility, championing ethical practices, diversity, inclusivity, and care for social and environmental causes. In a season of introspected transformation, we are called to embrace the full spectrum of our emotions and turn our vulnerability as a catalyst for growth.

A more sensitive approach will empower us to make more informed decisions, choosing wisely what to engage with and how to invest our time and resources. Through radical kindness and compassion, we will pave the way for a future, where every action is a testament to the transformative power of our empathy and human connection.



THE REPORT'S IMAGES HAVE BEEN CREATED BY LIVETREND WITH GENERATIVE AI.

# TRENDS OVERVIEW

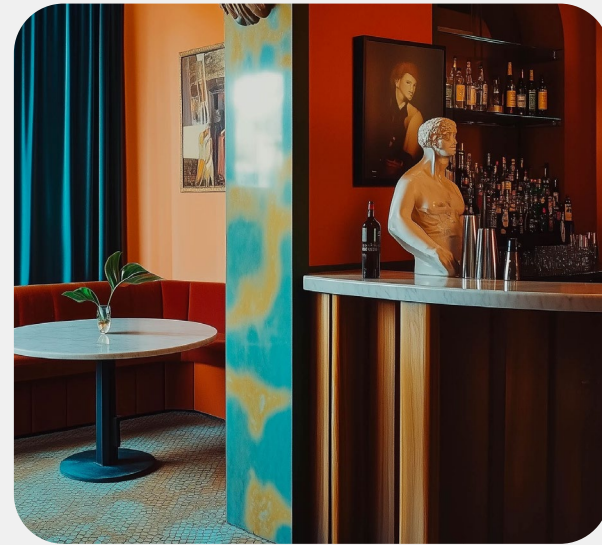
FALL/WINTER 2025/2026 FOOTWEAR

## UTOPIAN UTILITY



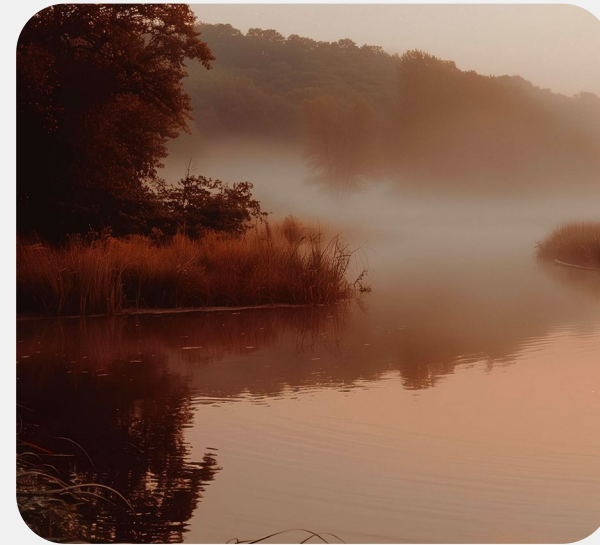
**TRANQUIL TREK**  
**CALM**  
**MINIMAL**

## TWISTED CLASSICS



**NEO PREPPY**  
**RETRO**  
**BOLD**

## MEDITATIVE ARTISAN



**MYSTICAL**  
**NOMAD**  
**PRIMAL**

## WONDRIOUS DAZE



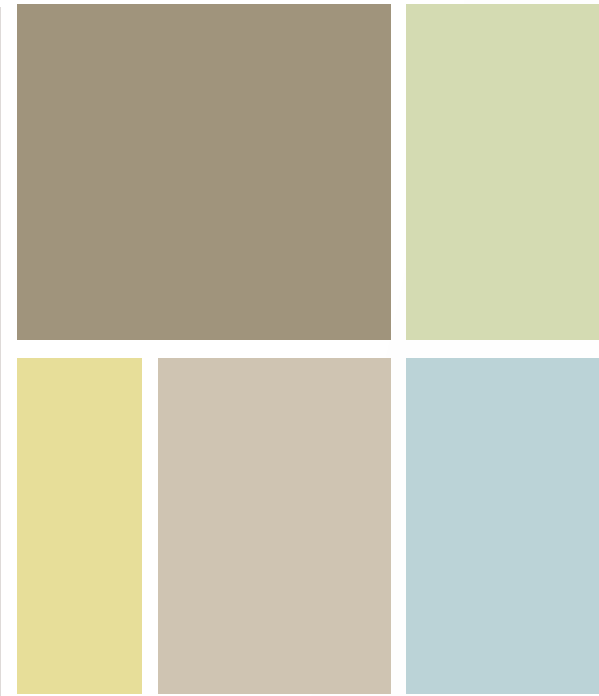
**PHANTASMIC**  
**DRAMATIC**  
**STRANGE BEAUTY**

# TREND UTOPIAN UTILITY

FALL/WINTER 2025/2026 FOOTWEAR

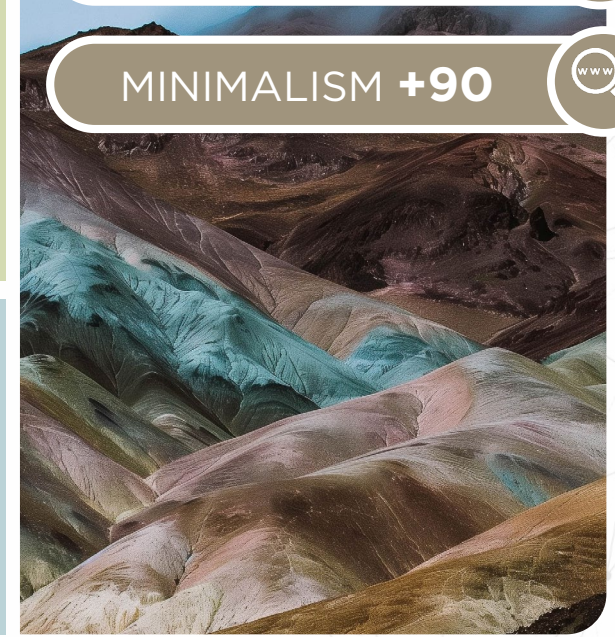


Utopian Utility is a FW25 trend that generates a harmonious blend between functionality and understated elegance. As simplicity meets innovation in a seamless fusion, this trend sets us up for an exploration of a more regenerative future. Rooted in low-tech essentials, this trend reinterprets the ruggedness of a currently trending #gorpcore aesthetic through a softer, more serene visual language. This style is adding a dreamy allure to workwear by exploring a utopian color palette with pastels and comforting neutrals. To enhance the tender tone, materials focus on their soft tactility: suede leathers, subtly shiny nylons, matte gummy surfaces, and buttery leathers are offering comfort and understated sophistication. Utopian Utility is not just about aesthetics; shoes are exploring new adaptable details in combination with sophisticated textiles and colorways to balance style and innovation.



GORPCORE +300%

MINIMALISM +90



## THE RACING BOOT



+21%

The Racing Boot is offering us the modern evolution of vintage boxing boots. Now, soft monochromes generate a more elevated than sporty look. In recent shows, Demeulemeester and Stella McCartney proposed the boot, announcing its growing commercial appeal.

## THE SOFT HIKER



+80%

With gorpcore still gripping onto the fashion industry, a more stylized and minimal approach on utility is upgrading classic outdoor shoes. The soft hiker is opting for suedes and dreamy pastels to give a utopian twist to a previously merely practical item.

## THE CURVED HEEL



+3200%

The curved heel detail is exploring convex and concave shapes for footwear. These new heels are inspired by both - natural and visionary forms. From pumps to boots, organic new forms are adding a sense of utopian flair to a range of essential footwear styles.

# TREND UTOPIAN UTILITY

FALL / WINTER 2025 / 2026 FOOTWEAR



## THE HYBRID SNEAKER



+53%

Protective details, waterproof layers and modular elements remain crucial for outdoor shoes, but also propose a fashionable additions for sneakers. The resulting hybrids blend extreme adaptability and sleek aesthetics.



## THE MINIMAL TECH BOOT



+48%

Kidswear is reinterpreting classic snow and outdoor boots in more stylish options. With monochrome colorways, these boots feel more technical and futuristic, while keeping soft features like wadded and puffy elements for a comforting look for rainy days.

## THE SLEEK HIKING BOOT



+5750%

Hiking boots remain an essential for menswear collections. Now more subtle colorways and elevated material choices balance its utilitarian function. Soft leather and suedes add a more elegant appearance to the performance piece and make it more urban and versatile.

## THE CALM HIKER



+58%

Boys' collections are manifesting the hiking boot as a core product for outdoor adventures. With frosty pastel colorways and pops of colors on laces and other details, the calm hiker feels fashionable and sophisticated despite its performance character.

## THE VOLUME SNOW BOOT



+400%

After the puffy snowboot has previously taken over womenswear, it is now proposing a utopian piece to men. With its unconventional product silhouette, this padded piece is not only keeping warm, but adding an entirely new proportion to men's winter outfits.

## THE VOLUME SNOW BOOT

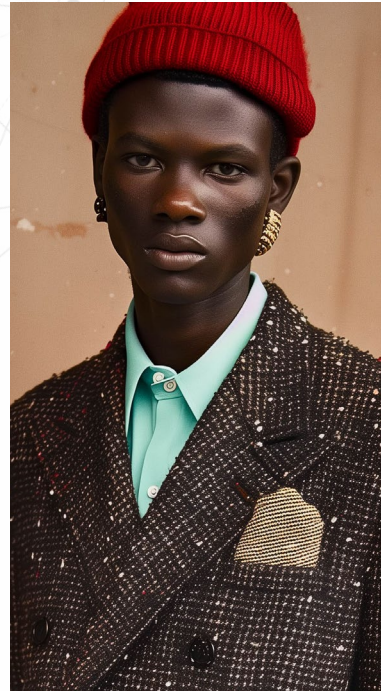
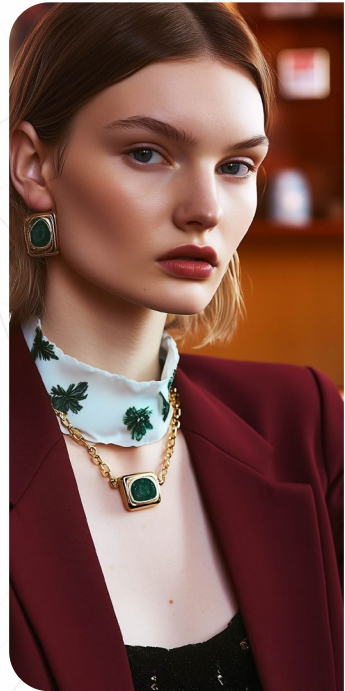


+42%

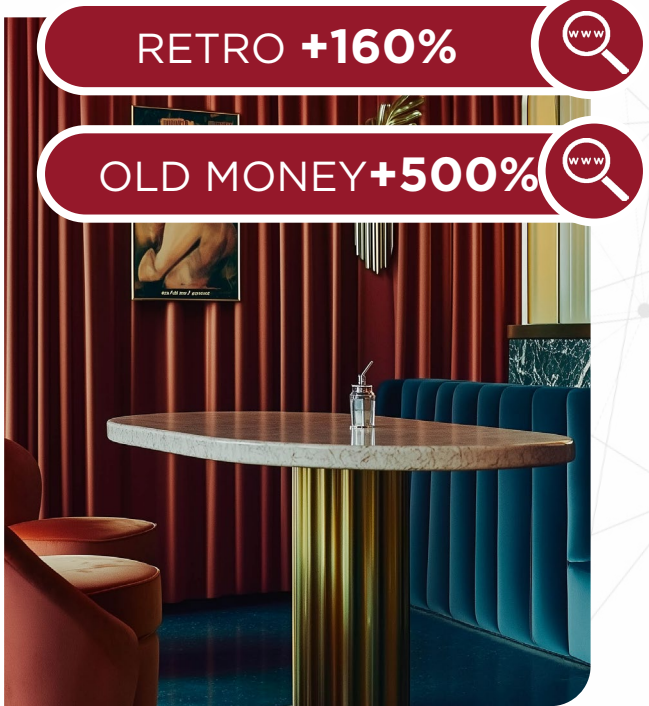
For girls, the volume snow boot is adding a sense of softness and cocooning protection to winter assortments. Inspired by womenswear's current craze for moonboots, the wadded or furry piece is becoming a highlight for multiple terrains to stand-out from the streets to the slopes.

# TREND TWISTED CLASSICS

FALL/WINTER 2025/2026 FOOTWEAR



Twisted Classics redefines timeless elegance by blending a rebellious spirit of youth with preppy vintage styles. While this trend is an ode to individuality, it tries to merge the old with the new and define our zeitgeist. The color scheme and materials evoke a sense of nostalgic glamour while embracing modern flair. Twisted Classics explores an iconic retro color palette, based on browns and reds, but dares to include invigorating pops of contemporary coral orange and light mint green. The materials explore elegant glossy surfaces with luxurious embossed animal skins or tweeds and are further accentuated by bold leopard prints. Key details include more complex buckled straps and geometric toe shapes. Twisted Classics celebrates the juxtaposition of vintage and contemporary elements. Styles exude refinement, honoring traditional footwear, while adding a more eccentric edge to designs for more modernity.



## THE MODERN KITTEN BOOT



+73%

The kitten-heel boot is becoming a staple for womenswear shoes. Iconic animal prints or embossed reptiles enrich the piece with an elegant allure, while new proportions - from extra slim to extra wide shafts - create more contemporary silhouettes to modernize the look.

## THE PREPPY SLING-BACK



+347%

The leading trends of Mary-Janes and the Sling-back pumps are now merged into a new product. Preppy sling-backs reshape familiar silhouettes into more stylish and intricate pieces and explore squared or rounded toes to accentuate the shoes' outlines for an even sleeker block heel look.

## THE COMPLEX MARY-JANE



+500%

The new Mary-Jane flat offers a more complex alternative to its classic predecessor. While keeping the prim and proper reference of the original, new looks merge other classic elements from brogues and implement multiple criss-cross straps for a more playful, subtly subversive look.



# TREND TWISTED CLASSICS

FALL/WINTER 2025/2026 FOOTWEAR



## THE RETRO BOWLER



+1500%

After the success of the iconic Samba sneaker, an even more retro-inspired option is moving into footwear: the 50s inspired bowling shoe. The piece is balancing chic and casual aspects of sneakers and leather shoes and enhances the trending dandy notion of menswear.

## THE GLOSSY CHELSEA



+8%

The glossy ankle boot is proposing a holiday-ready staple for boys and girls. It elevates the classic Chelsea boot with a super glossy, patent finish and exudes a chic yet edgy spirit. The shiny coating lends a joyful touch, a waterproof property, while remaining chic and preppy.

## THE FANCY PENNY LOAFER



+2216%

The penny loafer, with contrasted materials, is bringing back a fancy retro vibe. This dandy-inspired menswear fashion keeps growing as the #oldmoney aesthetic maintains to influence the market. However, the new pieces are opting for a more eccentric and glamorous option than previous quiet luxury styles.

## THE CHIC SNEAKER



+506%

The court sneaker maintains a classic but sporty piece in boys' footwear. In sleek monochrome or duo-tone leather options it enhances the modern minimal look despite the soccer retro inspiration. This versatile style adapts to every winter's occasions, remaining a staple piece.

## THE CREEPER LOAFER



+19%

The last fashion shows have announced the revival of the Creeper shoe for menswear. With Gucci and Valentino driving the look, the rebellious retro piece is gaining visibility. Exploring classic loafer uppers and urban creeper soles, the piece perfectly depicts the duality of rebellion and a preppy look.

## THE SLEEK ANIMALIER



+50%

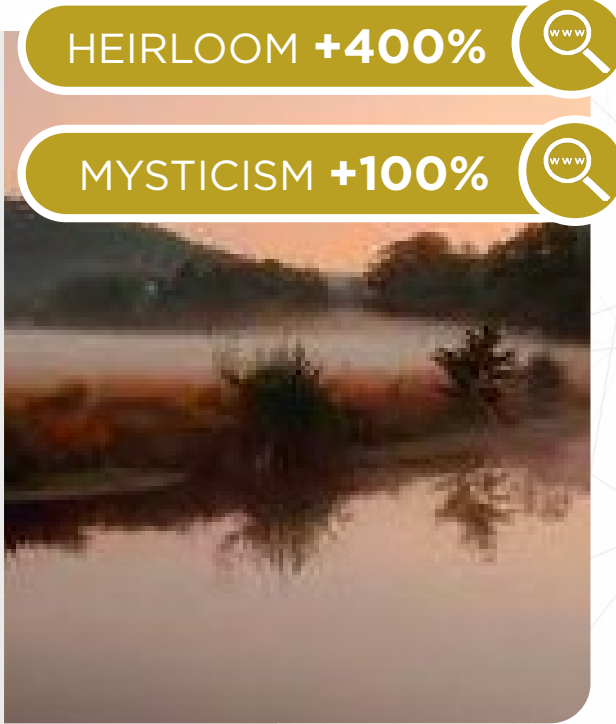
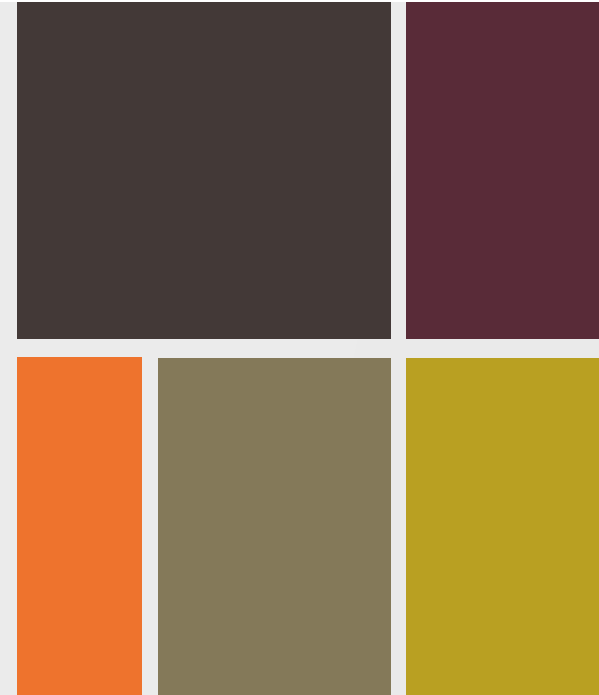
For girls, exuberant revisitation of classics are key. The iconic animalier is explored in several patterns and from sleek chunky loafers to minimal ballet flats and even boots. From prints to embossed finishings, the animal print adds a rebellious but fashionable twist undertone to shoes.

# TREND MEDITATIVE ARTISANS

FALL/WINTER 2025/2026 FOOTWEAR



The Meditative Artisans marks the return of the bohemian style. This trend embodies a harmonious blend of spirituality and craftsmanship. The look is designed for modern nomads who carry an alchemicist spirit with a taste for mystical depth. Drawing inspiration from primal aesthetics, this trend creates a sense of calm plentitude. A richly pigmented color palette highlights warming browns and mossy greens with burgundy and orange for an enchanting magical mix. Footwear styles showcase a set of bohemian and natural elements. Textured suedes add a sense of authenticity, while furry and fuzzy materials provide textures that celebrate the raw beauty of nature. Bohemian details like fringes, ornamental embroideries, and rustic apron-toes enhance the nomadic feel of the look. Meditative Artisans blends tradition and mysticism, offering a testament to craftsmanship that resonates with those who seek a deeper, more meaningful connection.



## THE HERITAGE BOOT



+242%

The riding-inspired heritage boot is manifesting as a core style for womenswear and is taking over from the previous craze for western boots. From classic knee-high to edgy thigh-high options, the piece can explore classic and chic or more rustic bohemian interpretations.

## THE FUZZY FLAT



+88%

The fuzzy flat proposes a cozy new option for the trending ballet flat. As the appeal of furry textures has extended across RTW it is announced to enrich womens' footwear this season. Minimal product silhouettes are crucial to manifest a primal yet elegant look.

## THE NOMAD CHUKKA



+39%

The Chukka boot adds a cozy bohemian option for the recently hyped mini-boots. Plateau soles can intensify the voluminous and cozy look of the shoe. Simultaneously, enhanced apron-toe seams and visible shearling inlays enrich the shoe with rustic authenticity for a nomad spirit.

# TREND MEDITATIVE ARTISANS

FALL/WINTER 2025/2026 FOOTWEAR



## THE HIGH HERITAGE



+200%

The knee boot has emerged as a new stand-out product for mens' footwear during the last fashion weeks. Its unconventional height is adding a traditional, almost ceremonial look to menswear collections - creating a heritage-driven yet modern aesthetic.

## THE TEXTURED SLIPPER



+80%

The fuzzy slipper is adding a natural texture to kids' in- and outdoor footwear collections. The furry feel is not only offering warmth and coziness for classic leisure products, but adds a playful animal-inspired narrative to the range.

## THE NOMAD CLOG



+41%

The nomadic clog offers a wintery option of the currently trending mules for menswear. The updated piece enhance the visual and tactile aspect of natural materials: Furry and fuzzy qualities, shearlings or rougher suedes are used for a more rural look here.

## THE COUNTRYSIDE CHELSEA



+11%

The country-inspired Chelsea boot is proposing a rustic ankle-height option for boys. With its sturdy and chunky lugsole and strap details, the classic leather boot includes new and modern elements and enhances the rustic, stained, blue-collar vibe of the shoe.

## THE RUSTIC BOOT



+53%

Rustic suede gorpcore boots add a nomadic spirit to the traditional outdoor piece. The product's brushed suedes and leathers integrate a raw character here. This subtly worn-out visual adds monochrome color nuances and intensifies the charming and personal feel of the boot.

## THE HIGHLAND BOOT

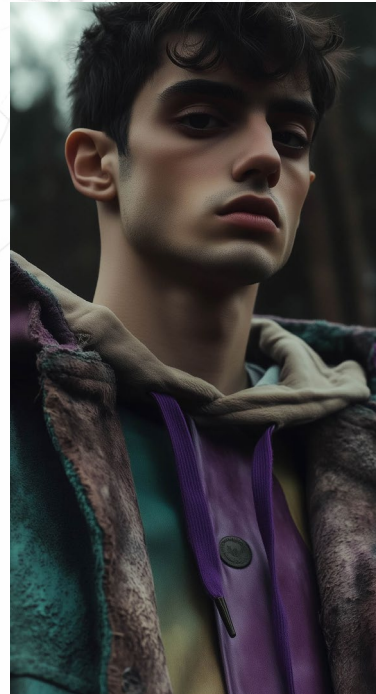
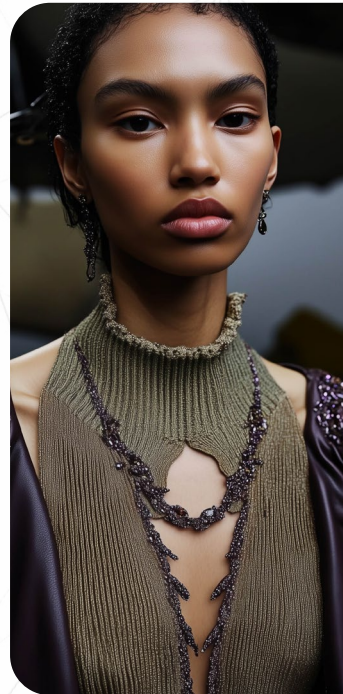


+112%

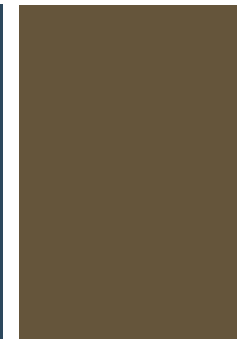
The heritage, highland-inspired boot is offering a sturdy style to girls' collections. Driven by western boot and riding boot styles and details, the look is celebrating the heritage of the countryside, while rustic leathers and shearlings generate an updated, rustic look for the new bohemian girls.

# TREND WONDROUS DAZE

FALL/WINTER 2025/2026 FOOTWEAR



Wondrous Daze embeds a striking aesthetic of strange beauty. Inspired by the plurality of our emotions, pulsating between good and bad, this trend seeks to connect opposites to find something meaningful. Wondrous Daze is inspired by contrast-driven aesthetics like #fairycore, #indie sleaze and #romanticpunk. The color palette combines swampy darks, mystical teal and purple with romantic hues into a subversive yet dreamy atmosphere. Materials explore a tactile richness that feels both luxurious and rebellious: velvets and embellishments meets glossy finishings and stains or distressed surfaces that add a layer of beautified imperfection. For the details, metal studs and hardware enhance the rougher look, while a sense of crafty but romantic maximalism is moving in focus: lace-ups, crystals and ribbons are combined with artistic opulence. Wondrous Daze highlights the beauty in imperfection, suggesting a new narrative of sensitivity and resilience.



PUNK +250%



FAIRYCORE +160%



## THE SHARP PUMP



The classic pump is looking at sharper amorphous outlines with closer décolletés to create a more edgy look. Most daring styles even close their uppers at ankle-high to transform into a micro version of the ankle bootie. High-shine leathers can enhance the sleek edge of this piece.

+10%



## THE EXTREME WIDE BOOT



The pointy boot remains a favourite piece for womenswear. For FW25, the boot explores extremely wide shafts to create more daring proportions. While some options remain minimal and sharp, others integrate sculptural slouchy volumes or studs for a rocky, individual spirit.

+100%



## THE STRAPPY FLAT



The strappy flat remains as an update of the ballet flat for the next season. Its subversive and rebellious use of lace-up and multiple straps accentuates a refined yet expressive approach to the usually softly feminine piece for a romantic rock allure that highlight accessory design.

+139%



# TREND WONDROUS DAZE

FALL / WINTER 2025 / 2026 FOOTWEAR



## THE RUGGED SNEAKER



+38%

After seasons of clean court sneakers, most fashionable clients are looking at worn-down styles as an alternative. The charm and beauty of wear-and-tear, crackled leathers, stains, reparations and soft deconstructions explore purposefully imperfect aesthetics now.

## THE BUCKLED BOOT



+711%

The buckled boot offers a timeless yet rebellious piece to kidswear. Chunky lugsoles and metal elements add an even harsher edge to classic combat styles, while glossy leather finishings add an elegant twist that balances the rough appeal of the shoe.

## THE RACER BOOT



+1080%

The Racer Boot explores the trend for security shoes and boots even further. Driven by edgy brands, like Balenciaga or GmbH, this product accentuates the heavy and rough style of some of the currently trending darker subcultures.

## THE HEFTY DERBY



+60%

For boys, the monochrome derby stands out due to new sharpened outlines, apron toe and chunkier soles. The heavy style is adding a harsher character to the formal piece. Creeper soles create a subcultural and rebellious feel here.

## THE HARDWARE DERBY



+10%

The punked-up derby remains a core item for fashion-forward formal mens' shoes. Here, outlines feel harsher due to chunkier soles and softly squared toes. Thick laces, studs, zippers or buckles are crucial to add a subcultural appeal to the usually chic and clean shoe.

## THE CHUNKY MARY-JANE



+24%

The chunky Mary-Jane adds a more edgy piece to girls' footwear assortments. With bold metal hardware the rebellious look of the previously preppy shoe is intensified. Colors from black to dark jewel tones enhance the gloomy, mystical touch of the piece even more.

# THANK YOU!

Livetrend is the first trend and market analytics solution for fashion, leveraging Artificial Intelligence, to help capitalize on the right trends to create, buy and sell best-seller collections, reducing overstocks in order to maximize the business and reduce the ecological impact.

As a pioneering startup, we are always looking forward and testing new technologies to bring to the fashion industry, so in this report, each footwear design has been generated by artificial intelligence driven by our experts and our data.

LIVETREND x MICAM<sup>99</sup>  
M I L A N O

[Livetrend.co](https://www.livetrend.co)

